

## WALL-MOUNT TYPES TIPOS MONTADOS EN LA PARED

أنواع تركيب على الجدار 懸壁型



Automatic shutters, Exhaust  
Obturador automático, escape

أغطية متحركة تلقائياً، تفرغية 自動鐵板，排風形

**FV-15AST1** (15cm/6")



Automatic shutters, Exhaust  
Obturador automático, escape

أغطية متحركة تلقائياً، تفرغية 自動鐵板，排風形

**FV-20AUT2** (20cm/8")

**FV-25AUT2** (25cm/10")

**FV-30AUT1** (30cm/12")



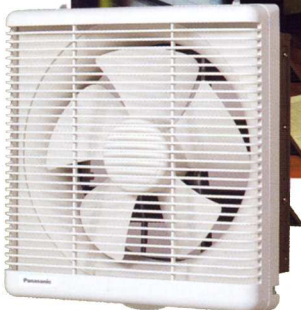
Cord-operated shutters, Reversible  
Obturador operado con cordón, reversibles

أغطية تعمل سلكياً، إنعكاسية الدوران 索動鐵板，可逆形

**FV-20RUT1** (20cm/8")

**FV-25RUT1** (25cm/10")

**FV-30RUT1** (30cm/12")



Louver types Tipos rejillas  
أنواع تصنع لأجورات 百葉窗型

Automatic Automático  
تلقائية 自動鐵板

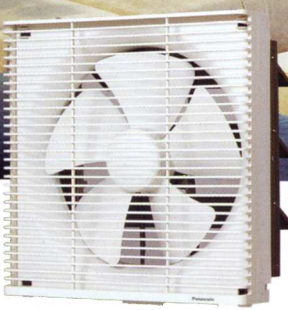
**FV-20LUT2** (20cm/8")

**FV-25LUT2** (25cm/10")

Reversible Reversibles  
إنعكاسية 可逆形

**FV-20RLT1** (20cm/8")

**FV-25RLT1** (25cm/10")



Automatic Automático  
تلقائية 自動鐵板

**FV-30AL5** (30cm/12")

Reversible Reversibles  
إنعكاسية 可逆形

**FV-30RL5** (30cm/12")



Metallic types, Exhaust Tipos metálicos, escape  
أنواع معدنية، تفرغية 金屬型，排風形

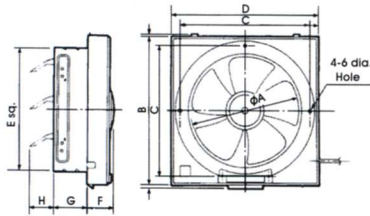
Automatic Automático  
تلقائية 自動鐵板

**FV-20AS2** (20cm/8")

**FV-25AS2** (25cm/10")

**FV-30AS2** (30cm/12")

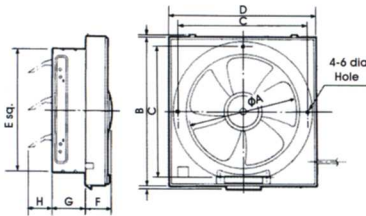




Model	A	B	C	D	E	F	G	H
FV-20AUT2	200 (7.87)	306 (12.05)	260 (10.24)	302 (11.89)	240 (9.45)	64 (2.52)	90 (3.54)	80 (3.15)
FV-25AUT2	250 (9.84)	356 (14.02)	310 (12.20)	352 (13.86)	290 (11.42)	50 (1.97)	90 (3.54)	63 (2.48)
FV-30AUT1	300 (11.81)	400 (15.75)	360 (14.17)	400 (15.75)	340 (13.39)	46 (1.81)	90 (3.54)	77 (3.03)

**Specifications**

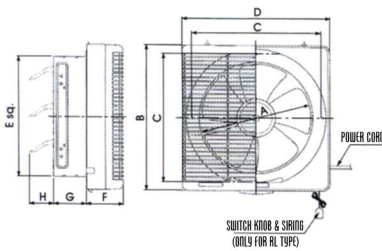
Model	Air Direction	Hz	Watt	R.P.M	Air Volume CMH (CFH)	Noise dB (A)	Weight (kg)
FV-20AUT2	Exhaust	50	26	1,173	546 (19,300)	38	2.4
		60	27	1,250	582 (20,600)	39	
FV-25AUT2	Exhaust	50	27	1,121	918 (32,400)	39	2.9
		60	32	1,146	942 (33,200)	39	
FV-30AUT1	Exhaust	50	33	915	1,158 (40,780)	40	3.8
		60	36	888	1,110 (39,190)	38	



Model	A	B	C	D	E	F	G	H
FV-20RUT1	200 (7.87)	306 (12.05)	260 (10.24)	302 (11.89)	240 (9.45)	64 (2.52)	90 (3.54)	80 (3.15)
FV-25RUT1	250 (9.84)	356 (14.02)	310 (12.20)	352 (13.86)	290 (11.42)	50 (1.97)	90 (3.54)	63 (2.48)
FV-30RUT1	300 (11.81)	406 (15.98)	360 (14.17)	402 (15.83)	340 (13.39)	43 (1.69)	90 (3.54)	78 (3.07)

**Specifications**

Model	Air Direction	Hz	Watt	R.P.M	Air Volume CMH (CFH)	Noise dB (A)	Weight (kg)
FV-20RUT1	Exhaust	50	27	1,230	570 (20,100)	36	2.4
		60	28	1,350	630 (22,200)	39	
		50	23	1,205	402 (14,200)	46	
FV-25RUT1	Exhaust	60	24	1,320	438 (15,500)	49	2.9
		50	31	1,160	930 (32,800)	38	
		60	34	1,170	930 (32,800)	39	
FV-30RUT1	Intake	50	24	1,020	612 (21,600)	45	3.6
		60	26	950	576 (20,300)	44	
		50	34	970	1,164 (41,100)	39	
FV-30RUT1	Exhaust	60	36	955	1,146 (40,500)	38	3.6
		50	25	845	780 (27,500)	43	
		60	26	810	738 (26,100)	42	



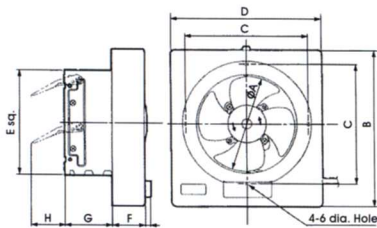
Model	A	B	C	D	E	F	G	H
FV-20LUT2	200 (7.87)	306 (12.05)	260 (10.24)	302 (11.89)	240 (9.45)	64 (2.52)	90 (3.54)	84 (3.31)
FV-25LUT2	250 (9.84)	356 (14.02)	310 (12.20)	352 (13.86)	290 (11.42)	50 (1.97)	90 (3.54)	64 (2.52)
FV-20RLT1	200 (7.87)	306 (12.05)	260 (10.24)	302 (11.89)	240 (9.45)	88 (3.46)	90 (3.54)	80 (3.15)
FV-25RLT1	250 (9.84)	356 (14.02)	310 (12.20)	352 (13.86)	290 (11.42)	68 (2.68)	90 (3.54)	63 (2.48)

**Specifications**

Model	Air Direction	Hz	Watt	R.P.M	Air Volume CMH (CFH)	Noise dB (A)	Weight (kg)
FV-20LUT2	Exhaust	50	26	1,163	516 (18,200)	40	2.7
		60	27	1,233	546 (19,300)	40	
FV-25LUT2	Exhaust	50	27	1,074	852 (30,100)	41	3.2
		60	32	1,093	870 (30,700)	41	
FV-20RL6	Exhaust	50	29	1,210	546 (19,300)	39	2.7
		60	29	1,330	600 (21,200)	43	
		50	21	1,220	384 (13,600)	46	
FV-25RL6	Intake	60	22	1,350	408 (14,400)	49	3.2
		50	32	1,110	876 (30,900)	41	
		60	34	1,100	834 (29,500)	41	
FV-25RL6	Exhaust	50	25	1,020	570 (20,100)	45	3.2
		60	26	970	540 (19,100)	43	

**FV-15AST1**

Dimensions mm (inches)



Model	A	B	C	D	E	F	G
FV-15AST1	150 (5.91)	254 (10.00)	195 (7.68)	240 (9.45)	170 (6.69)	52 (2.05)	75 (2.95)

**Specifications**

Model	Air Direction	Hz	Watt	R.P.M	Air Volume CMH (CFH)	Noise dB (A)	Weight (kg)
FV-15AST1	Exhaust	50	15	1,480	288 (10,170)	31	1.4
		60	19	1,560	306 (10,800)	34	

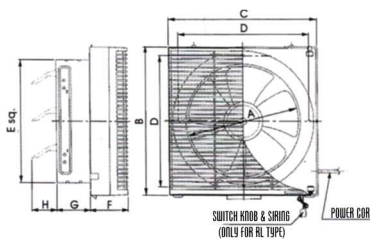
Inside diameter of wooden frame:

- \*20cm (8") models - 250 x 250mm
- \*25cm (10") models - 300 x 300mm
- \*30cm (12") models - 350 x 350mm

\*Note: The values in specification tables are representative characteristic values at 220V, 50/60Hz.

**FV-30AL5 FV-30RL5**

Dimensions mm (inches)



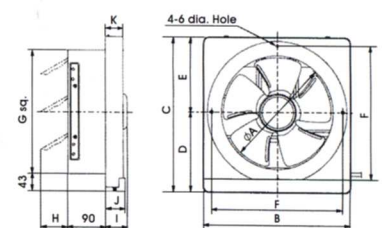
Model	A	B	C	D	E	F	G	H
FV-30AL5	300 (11.81)	400 (15.75)	400 (15.75)	360 (14.17)	340 (13.39)	81 (3.19)	90 (3.54)	78 (3.07)

**Specifications**

Model	Air Direction	Hz	Watt	R.P.M	Air Volume CMH (CFH)	Noise dB (A)	Weight (kg)
FV-30AL5	Exhaust	50	29	852	930 (32,800)	43	3.9
		60	31	859	912 (32,200)	42	
FV-30RL5	Exhaust	50	34	828	990 (35,000)	44	3.9
		60	36	807	942 (33,300)	44	
		50	26	772	708 (25,000)	43	
FV-30RL5	Intake	60	27	758	678 (23,900)	42	3.9

**FV-20AS2 FV-25AS2 FV-30AS2**

Dimensions mm (inches)



Model	A	B	C	D	E	F	G	H	I	J	K
FV-20AS2	200 (7.87)	302 (11.89)	312 (12.28)	162 (6.38)	150 (5.91)	260 (10.24)	240 (9.45)	83 (3.27)	71 (2.80)	50 (1.97)	46 (1.81)
FV-25AS2	250 (9.84)	352 (13.86)	362 (14.25)	187 (7.36)	175 (6.89)	310 (12.20)	290 (11.42)	65 (2.56)	51 (2.01)	45 (1.77)	41 (1.61)
FV-30AS2	300 (11.81)	402 (15.83)	412 (16.22)	212 (8.35)	200 (7.87)	360 (14.17)	340 (13.39)	81 (3.19)	51 (2.01)	45 (1.77)	41 (1.61)

**Specifications**

Model	Air Direction	Hz	Watt	R.P.M	Air Volume CMH (CFH)	Noise dB (A)	Weight (kg)
FV-20AS2	Exhaust	50	26	1,220	516 (18,200)	38	3.3
		60	26	1,400	612 (21,600)	41	
FV-25AS2	Exhaust	50	31	1,200	858 (30,300)	39	3.8
		60	33	1,300	954 (33,690)	41	
FV-30AS2	Exhaust	50	33	1,050	1,182 (41,700)	39	4.4
		60	37	1,030	1,164 (41,100)	39	



Matsushita Ecology Systems Co., Ltd.  
4017, Takaki - cho, Kasugai, Aichi, Japan.

**THAI ENGINEERING AND BUSINESS CO., LTD.**

20/3 Soi Sukhumvit 26, Sukhumvit Rd.,  
Klongton, Klongtoey, Bangkok 10110  
Tel : 66 (0) 2259-6450 (6 line) Fax : 66 (0) 258-9780  
E-mail : tebcom@mozart.inet.co.th